

DIS-1004

Sample ID: 2105KCA0869.2155

Cultivar: N/A

Matrix: Concentrates & Extracts

Type: Distillate

Sample Size:

Received: 05/18/2021

Completed: 05/25/2021

Batch#: OIL-1045

Client

Discover CBD

Lic.#

2255 Reliable Cir.

Colorado Springs, CO 80906



Summary

Test

Cannabinoids

Date Tested

05/25/2021

Result

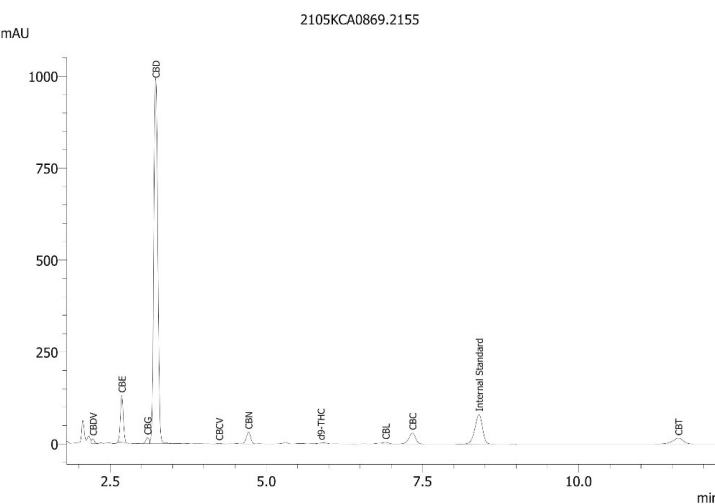
Complete

Cannabinoids by HPLC-PDA

Complete

0.09590%	64.85095%	68.31989%	NT Not Tested	Not Tested
Total THC	Total CBD	Total Cannabinoids	Moisture Content	Foreign Matter

Analyte	LOD	LOQ	Result	Result	
	%	%	%	mg/g	mAU
CBC	0.00950	0.02840	1.96543	19.6543	
CBGA	0.01810	0.05430	ND	ND	
CBGV	0.00600	0.01800	0.06817	0.6817	
CBD	0.00810	0.02420	64.85095	648.5095	
CBDA	0.00430	0.01300	ND	ND	
CBDV	0.00610	0.01820	0.37811	3.7811	
CBDVA	0.00210	0.00630	ND	ND	
CBG	0.00570	0.01720	0.63653	6.3653	
CBGA	0.00490	0.01470	ND	ND	
CBL	0.01120	0.03350	0.24638	2.4638	
CBLA	0.01240	0.03710	ND	ND	
CBN	0.00560	0.01690	0.07842	0.7842	
CBNA	0.00600	0.01810	ND	ND	
Δ8-THC	0.01040	0.03120	ND	ND	
Δ9-THC	0.00760	0.02270	0.09590	0.9590	
THCA	0.00840	0.02510	ND	ND	
THCV	0.00690	0.02060	ND	ND	
THCVA	0.00620	0.01860	ND	ND	
Total THC			0.09590	0.95900	
Total CBD			64.85095	648.50950	
Total			68.31989	683.1989	



Total THC = THCA * 0.877 + Δ9-THC

Total CBD = CBDA * 0.877 + CBD

LOD = Limit of Detection

LOQ = Limit of Quantitation

ND = None Detected

For plant material, the reported result is based on a sample weight with the applicable moisture content for that sample.



Wes Rogers

Wes Rogers
Principal Scientist
05/25/2021



ISO/IEC 17025:2017 Accredited
Accreditation #108651

This product or substance has been tested by KCA Laboratories using validated testing methodologies and a quality system. Values reported relate only to the product or substance tested. KCA Laboratories makes no claims as to the efficacy, safety or other risks associated with any detected or non-detected amounts of any substances reported herein. This Certificate of Analysis shall not be reproduced except in full, without the written approval of KCA Laboratories.